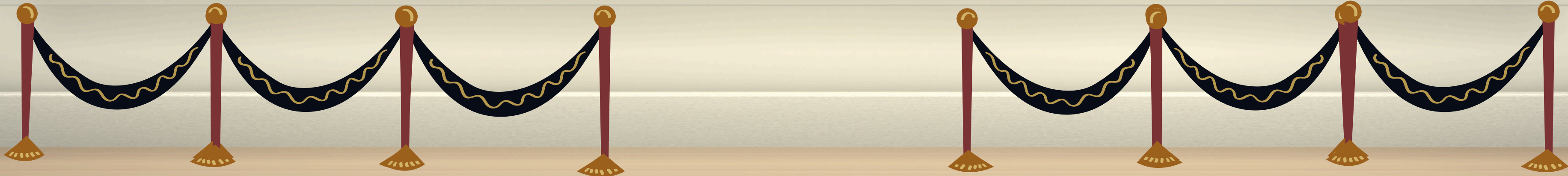




  
NATIONAL PTA®  
REFLECTIONS®

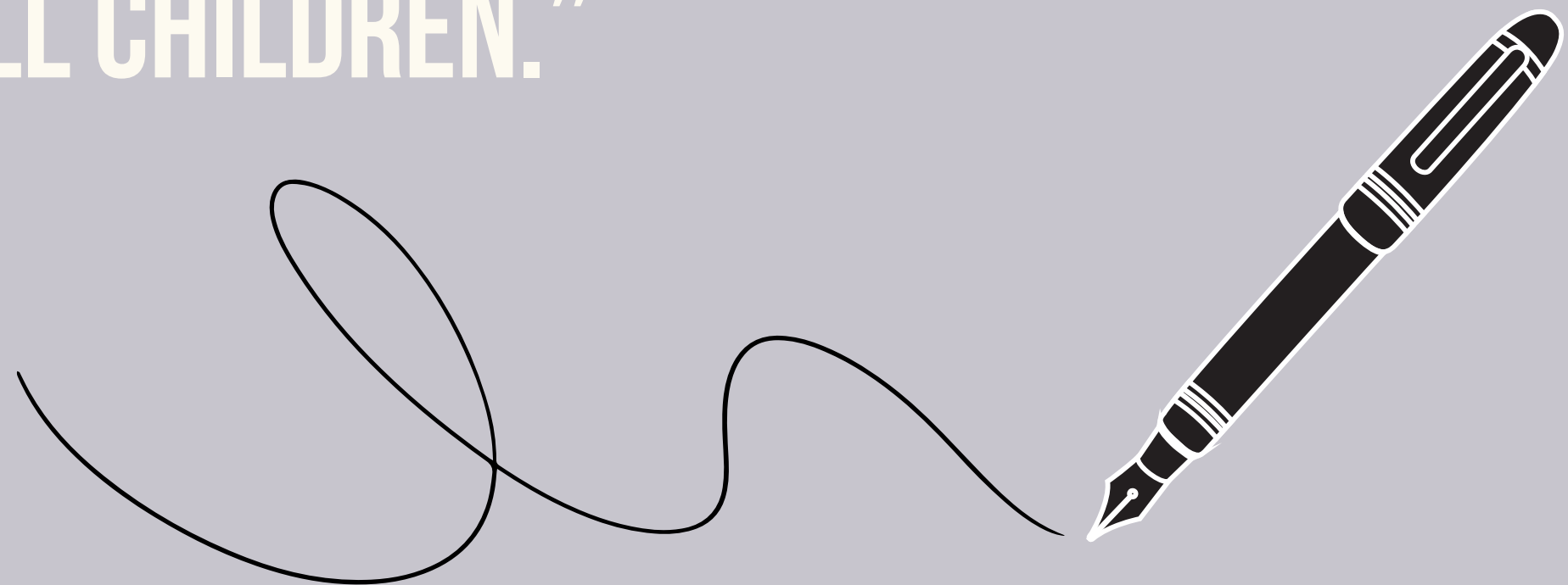


# 2024-2025 Reflections Program



# OUR MISSION

**“TO MAKE EVERY CHILD’S POTENTIAL A REALITY BY  
ENGAGING AND EMPOWERING FAMILIES AND COMMUNITIES  
TO ADVOCATE FOR ALL CHILDREN.”**



# FOUR FACTS ABOUT REFLECTIONS



Founded in 1969, PTA Reflections is known as our oldest and largest national student recognition program in the arts.

The program encourages children to reflect on a common theme and create original artwork in literature, visual and performing arts.



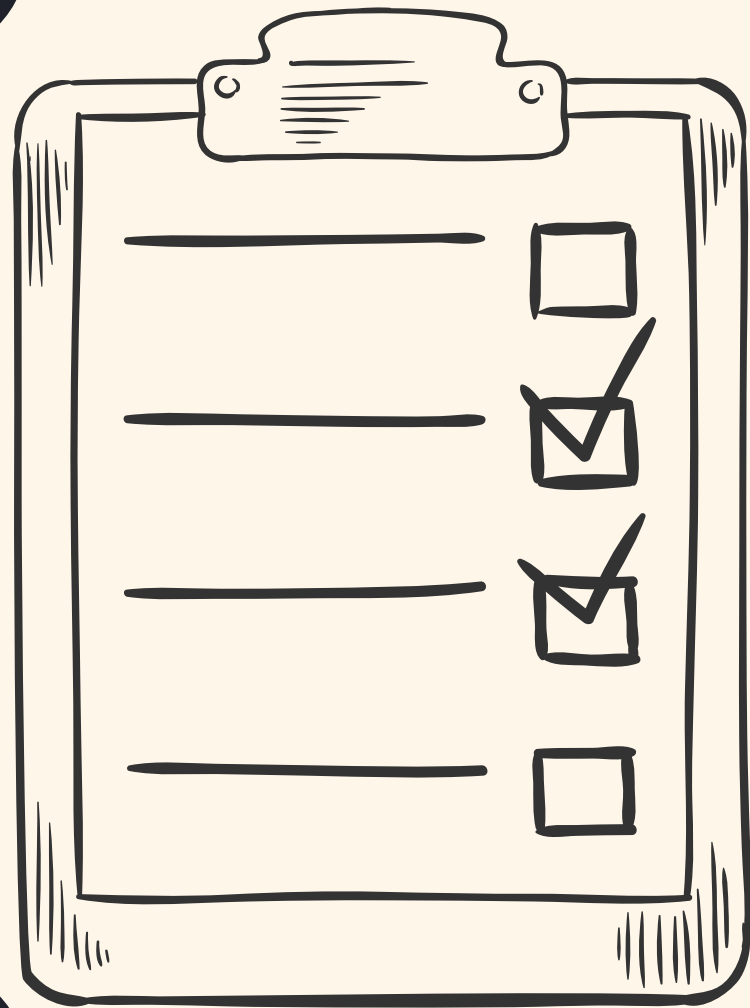
Each year, PTAs engage over 300,000 students and their families in Arts Education, and is a valuable tool for strengthening school-community partnerships.

Participation in arts programs, like PTA Reflections, plays a critical role in students' success by leveling playfields and developing students holistically.



# LOCAL UNIT REFLECTIONS CHAIR DUTIES

The PTA Reflections program is now offered via a digital format. The general tasks for local unit Reflections leaders include:



Register your PTA's participation in this year's program with National PTA.

Distribute program materials.

Recruit volunteer judges - EARLY!!!

Collect entries & coordinate judging.

Advance top entries to the next level.

Celebrate & recognize students!



# 2024-25 SCHEDULE & DEADLINES

01

## Local Units

Set your submission deadline in keeping with your **HCCPTAP TSA Deadline NOVEMBER 22, 2024.**

### Submission Intake:

- Digital Submission to advance your winning entries to HCCPTAP TSA will be through a Google Form Link. Link will be posted on HCCPTAP TSA website.
- Reflections Chairs must email Form A and Form B to [Reflections@hccptaptsa.org](mailto:Reflections@hccptaptsa.org)  
**DIGITAL SUBMISSIONS ONLY.**

02

## County Councils

- County & Regional judging should be completed by January 5, 2024.
- All entries uploaded to the National PTA Student Entry portal by January 12, 2024.

## State PTA

- March 1, 2024 - Entries that won at state level must be uploaded to National PTA portal
- Early March - State winners announced - invited to state ceremony
- State ceremony - TBD

03

## National PTA

- May: National Reflections winners announced





# NATIONAL PTA REFLECTIONS THEME SEARCH CONTEST

The Reflections program theme is chosen each year from hundreds of suggestions submitted by students across the country.

Students at schools with a PTA in Florida, even if the PTA does not participate in the Reflections program, can submit their suggested themes. Submit themes to Florida PTA by October 20th. The Reflections Committee then selects the top 5 entries to be advanced to the National PTA.

One national winner is selected by the National PTA in February. The winning student receives a \$100 award and national recognition.

NATIONAL PTA  
**REFLECTIONS**<sup>®</sup>

# Reflections Theme Search

## Your Idea Could Inspire the Nation!





# THIS YEAR'S REFLECTIONS THEME

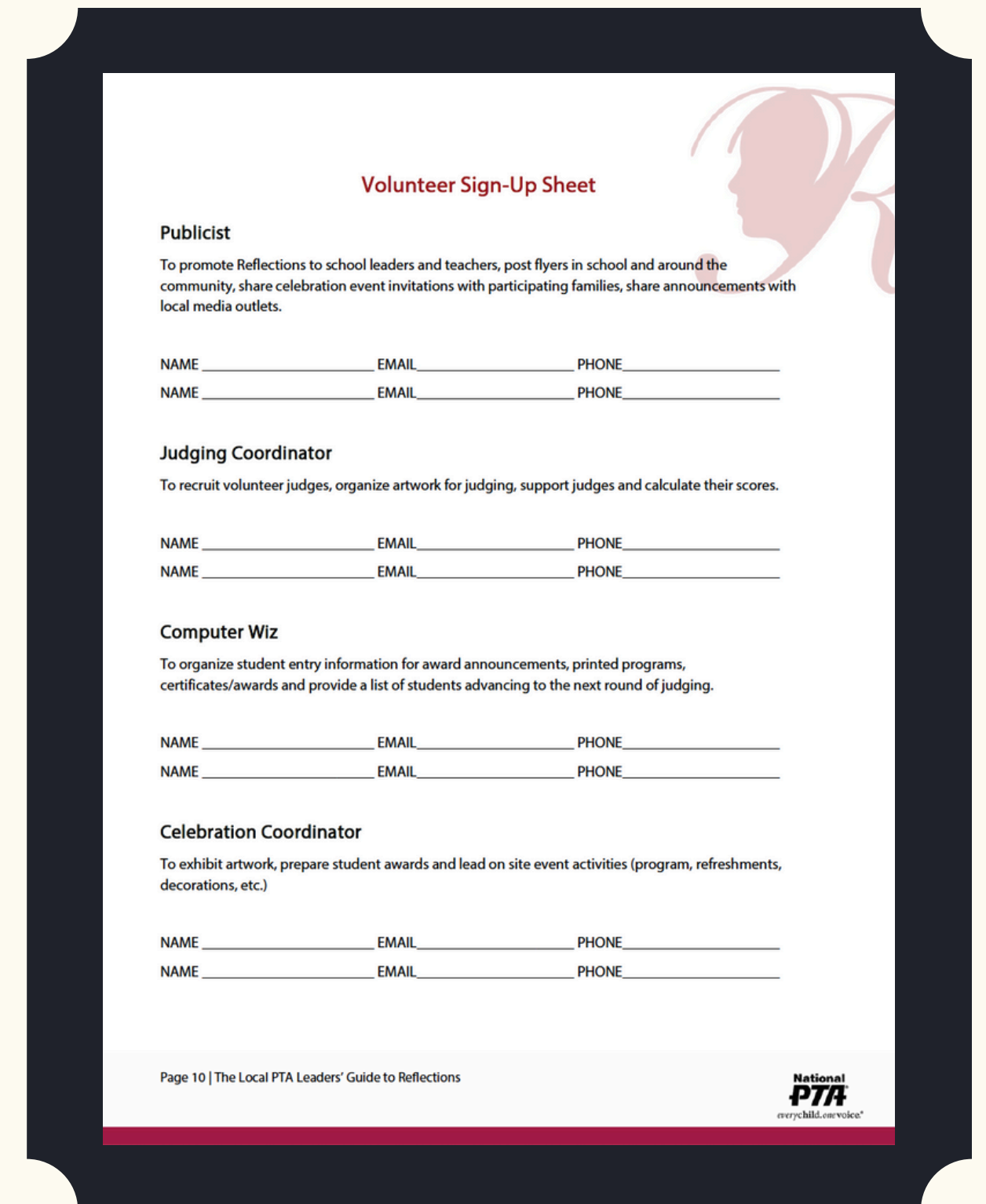


**Ben Morgan**, a 6th grader from Lewis and Clark Middle School PTSA in Boise, Idaho. His winning theme suggestion has earned him \$100 and will inspire thousands of students across the nation during the 2024 - 2025 Reflections program. During the program, Ben took a moment to share his inspiration for his winning theme. He explained, that he wanted to create "a theme that many people could relate to."



# STEP 1: REGISTER. CONNECT. RECRUIT.

- Register your PTA with National PTA Reflections program at [PTA.org/Reflections](https://www.pta.org/Reflections) (Local Units must be in compliance in order to participate in Reflections).
- Make sure your PTA is registered as participating in Reflections with the state office.
- Visit the Reflections pages on the HCCPTAP TSA website to get all details for our program:  
[https://www.hccptaptsa.org/reflections\\_1](https://www.hccptaptsa.org/reflections_1)
- Kick off your program by celebrating National Arts and Humanities Month - September
- Recruit Volunteers for your Reflections Committee & delegate tasks:
  - ★ Promote Program
  - ★ Coordinate Judging
  - ★ Host Celebration Events



**Volunteer Sign-Up Sheet**

**Publicist**  
To promote Reflections to school leaders and teachers, post flyers in school and around the community, share celebration event invitations with participating families, share announcements with local media outlets.

NAME \_\_\_\_\_ EMAIL \_\_\_\_\_ PHONE \_\_\_\_\_  
NAME \_\_\_\_\_ EMAIL \_\_\_\_\_ PHONE \_\_\_\_\_

**Judging Coordinator**  
To recruit volunteer judges, organize artwork for judging, support judges and calculate their scores.

NAME \_\_\_\_\_ EMAIL \_\_\_\_\_ PHONE \_\_\_\_\_  
NAME \_\_\_\_\_ EMAIL \_\_\_\_\_ PHONE \_\_\_\_\_

**Computer Wiz**  
To organize student entry information for award announcements, printed programs, certificates/awards and provide a list of students advancing to the next round of judging.

NAME \_\_\_\_\_ EMAIL \_\_\_\_\_ PHONE \_\_\_\_\_  
NAME \_\_\_\_\_ EMAIL \_\_\_\_\_ PHONE \_\_\_\_\_

**Celebration Coordinator**  
To exhibit artwork, prepare student awards and lead on site event activities (program, refreshments, decorations, etc.)

NAME \_\_\_\_\_ EMAIL \_\_\_\_\_ PHONE \_\_\_\_\_  
NAME \_\_\_\_\_ EMAIL \_\_\_\_\_ PHONE \_\_\_\_\_

Page 10 | The Local PTA Leaders' Guide to Reflections

National PTA  
everychild.onevoice®

# STEP 2: CUSTOMIZE & DISTRIBUTE

**All entries are to be submitted digitally.**

**Edit program materials to include:**

- **Available arts categories for participation**
- **Program deadlines**
- **Directions for submitting entries**
- **Distribute to program participants**
- **Student Entry Forms – Google form or paper**
- **Rules & Instructions**



**INCLUDE ADDITIONAL DETAILS  
IN THE STUDENT MATERIALS  
LIKE:**

- CONTACT INFORMATION
- SUBMISSION INSTRUCTIONS (E.G., PHYSICAL VS. DIGITAL)
- ADDITIONAL RULES FOR STUDENT ELIGIBILITY




# ENTRY FORM 101

LOCAL UNIT REFLECTIONS CHAIRS MUST COMPLETE ALL FIELDS IN THE PTA BOX - IDEALLY BEFORE COPYING!

STUDENT & PARENT SIGNATURES (ELECTRONIC SIGNATURES OK)

TITLE (REQUIRED) & SUBMISSION DETAILS



### ENTRY FORM

*To be completed by PTA before distribution.*

LOCAL PTA \_\_\_\_\_ LOCAL PTA ID \_\_\_\_\_  
LOCAL PROGRAM CHAIR \_\_\_\_\_ EMAIL \_\_\_\_\_ PHONE \_\_\_\_\_  
COUNCIL PTA \_\_\_\_\_ DISTRICT PTA \_\_\_\_\_ REGION PTA \_\_\_\_\_ STATE PTA \_\_\_\_\_ Florida \_\_\_\_\_  
MEMBER DUES PAID DATE \_\_\_\_\_ INSURANCE PAID DATE \_\_\_\_\_ BYLAWS APPROVAL DATE \_\_\_\_\_

STUDENT NAME \_\_\_\_\_ GRADE \_\_\_\_\_ AGE \_\_\_\_\_ CLASSROOM \_\_\_\_\_  
PARENT/GUARDIAN NAME \_\_\_\_\_ EMAIL \_\_\_\_\_ PHONE \_\_\_\_\_  
MAILING ADDRESS \_\_\_\_\_ CITY \_\_\_\_\_ STATE \_\_\_\_\_ ZIP \_\_\_\_\_


Ownership in any submission shall remain the property of the entrant, but entry into this program constitutes entrant's irrevocable permission and consent that PTA may display, copy, reproduce, enhance, print, sublicense, publish, distribute and create derivative works for PTA purposes. PTA is not responsible for lost or damaged entries. Submission of entry into the PTA Reflections program constitutes acceptance of all rules and conditions. I agree to the above statement and the National PTA Reflections Official Rules.

STUDENT SIGNATURE \_\_\_\_\_ PARENT/GUARDIAN SIGNATURE \_\_\_\_\_

**GRADE DIVISION (Check One)**  
 PRIMARY (Pre-K-Grade 2)  
 INTERMEDIATE (Grades 3-5)  
 MIDDLE SCHOOL (Grades 6-8)  
 HIGH SCHOOL (Grades 9-12)  
 SPECIAL ARTIST (All Grades)

**ARTS CATEGORY (Check One)**  
 DANCE CHOREOGRAPHY  
 FILM PRODUCTION  
 LITERATURE  
 MUSIC COMPOSITION  
 PHOTOGRAPHY  
 VISUAL ARTS

TITLE OF WORK \_\_\_\_\_ DETAILS \_\_\_\_\_  
If background music is used in **dance/film**, citation is required. Include word count for **literature**. List musician(s) or instrumentation for **music**. List dimensions for **photography/visual arts**.  
**ARTIST STATEMENT** (In 10 to 100 words, describe your work and how it relates to the theme)  
\_\_\_\_\_  
\_\_\_\_\_  
\_\_\_\_\_  
\_\_\_\_\_



STUDENT INFORMATION

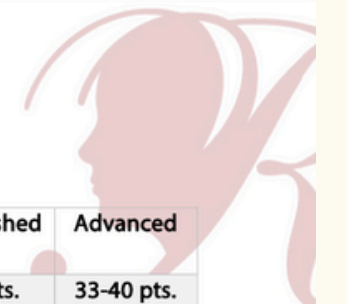
SUBMISSION CATEGORY & GRADE DIVISION

ARTIST STATEMENT (REQUIRED)

# STEP 3: COORDINATE JUDGING

Tap into the community around you when recruiting judges. Consider the following potential community members:

1. Having school or district administrators serve as judges to increase recognition of the program and the arts.
2. Local art professionals like art teachers, artists or art businesses people will have connections and can serve as special “celebrity” judges.
3. Former judges and Reflections advocates. Using kept records from past program years, reach out to reengage or find new volunteers.
4. Students and arts professors from local colleges and universities. These individuals may be looking for ways to get involved in their community.
5. Former state-level Reflections winners and recent graduates. These folks already know and love the program- recruit them and let them feel like experts themselves!



Reflections Reviewer Criteria

Criteria / Level	Beginning	Developing	Proficient	Accomplished	Advanced
<b>Interpretation</b>	<b>1-8 pts.</b>	<b>9-16 pts.</b>	<b>17-24 pts.</b>	<b>25-32 pts.</b>	<b>33-40 pts.</b>
How closely the piece relates to the theme, based on the Work itself and the artist statement.	The interpretation lacks clarity and does not communicate the student's concept.	The interpretation lacks clarity and does not fully communicate the student's concept based on the theme.	The interpretation communicates the student's concept based on the theme.	The interpretation clearly communicates the student's concept based on the theme but lacks meaning, purpose, and integrity.	The interpretation clearly communicates the student's whole concept based on the theme with meaning, purpose and integrity.
<b>Creativity</b>	<b>1-6 pts.</b>	<b>7-12 pts.</b>	<b>13-18 pts.</b>	<b>19-24 pts.</b>	<b>25-30 pts.</b>
How creative and original the piece is in its conception of the theme and its presentation.	Work is somewhat original and reflects the theme using very conventional ways.	Work is somewhat original and reflects the theme using conventional ways.	Work is original and reflects the theme using conventional ways.	Work is primarily original and reflects the theme using imaginative ways.	Work is highly original and reflects the theme using unconventional, interesting, imaginative and new ways.
<b>Technique</b>	<b>1-6 pts.</b>	<b>7-12 pts.</b>	<b>13-18 pts.</b>	<b>19-24 pts.</b>	<b>25-30 pts.</b>
The level of skill demonstrated in the basic principles/ techniques of the arts area.	Work demonstrates very limited skill of the arts area.	Work demonstrates limited skill of the arts area.	Work demonstrates capable skill of the arts area.	Work demonstrates expertise of skill of the arts area.	Work demonstrates mastery of skill and knowledge of the arts area.



# STEP 4: ADVANCEMENT & CELEBRATE

## **Advancement:**

Advance finalists to the next level according to HCCPTAP TSA guidelines and Deadlines. Local Units are to send their top 3 entries in each category/division to County. All advancing entries must be uploaded to the HCCPTAP TSA Google Doc Intake Form by November 22nd, 2024. Link to form will be posted on the HCCPTAP TSA Website.

## **Celebrate your students:**

- Assign awards by art categories and grade division.
- Announce winners on school websites and social media and tag
- Offer awards from ShopPTA.com and donated prizes from community supporters.
- Host a student recognition event for families.
- Showcase student works at school and in the community.

## **Social Media Tags**

@HCCPTAP TSA

@FLPTAReflections

@FLPTA

#artsed

#showusyourart



# STEP 5: DON'T FORGET TO WRAP-UP!

Make sure to thank students, parent leaders, school personnel, Judges, and community businesses for their support!

Return non-advancing works and contact students who are advancing in the competition.

Host a debrief with your volunteers committee.

Update your PTA/PTSA Executive board with results.

Record notes and contacts for next year's Reflections Chair.

THANK  
you



# ARTS CATEGORY & GRADE DIVISION OVERVIEW

**All entries must be an original creation done by a single student for this year's Reflections theme.**

## **Art Categories:**

- Dance Choreography
- Film Production
- Literature
- Music Composition
- Photography
- Visual Arts

## **Grade Divisions:**

- Primary: Pre-K thru Grade 2
- Intermediate: Grade 3 - 5
- Middle School: Grade 6 - 8
- High School: Grade 9 - 12
- Accessible Arts (ALL GRADES)



# DANCE CHOREOGRAPHY CATEGORY

## Key Points :

Solo and ensemble works of all dance styles are accepted. Entrant must be the choreographer and may also be the performer, or one of the performers. If background music is used, cite it on the entry form.

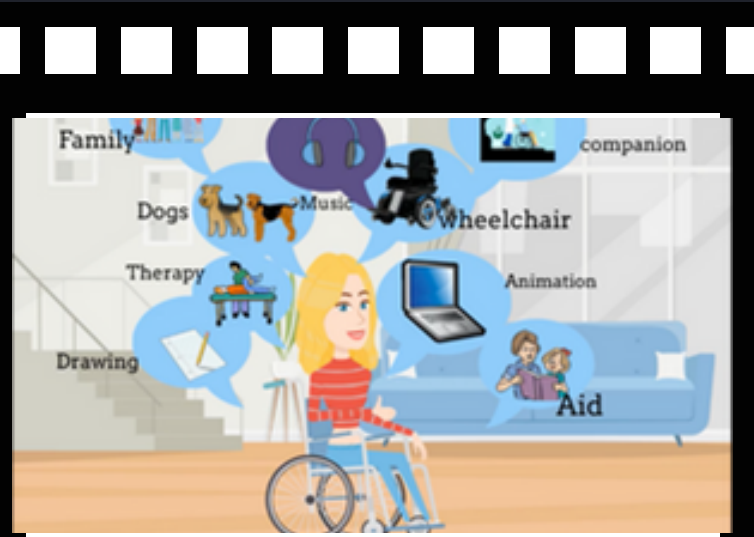
## Video Requirements :

- Length must not exceed 5 minutes
- File size 1000MB or less
- Accepted formats: AVI, MP4, MOV





# FILM PRODUCTION CATEGORY



## Key Points :

Accepted short film styles include: Animation, narrative, documentary, experimental or media presentation. All screenwriting, directing and editing must be done by the student producer. If background music is used, cite it on the entry form.

## Video Requirements :

- Length must not exceed 5 minutes
- File size 1000MB or less
- Accepted formats: AVI, MP4, MOV
- Use of PowerPoint is prohibited.

# LITERATURE CATEGORY

## Key Points :

Accepted forms of fiction and nonfiction include: prose, poetry, reflective essay, screenplay, and play script, narrative, and short story. Entrants may write in their primary language if an interpretive English translation is also attached. Use of copyrighted material is prohibited.

## Other Considerations:

- Must not exceed 2,000 words
- Must include word count on application form
- May be handwritten or typed
- Single-sided print on 8 ½x11" paper
- PDF file

Stage Freight

The Remarkable Life of Caleb

The Three Little Caterpillars

Wires Crossed

MAKE A DIFFERENCE

THE BOY & THE JAGUAR

*It's Up to Us*

Sunny Days Ahead

# MUSIC COMPOSITION CATEGORY

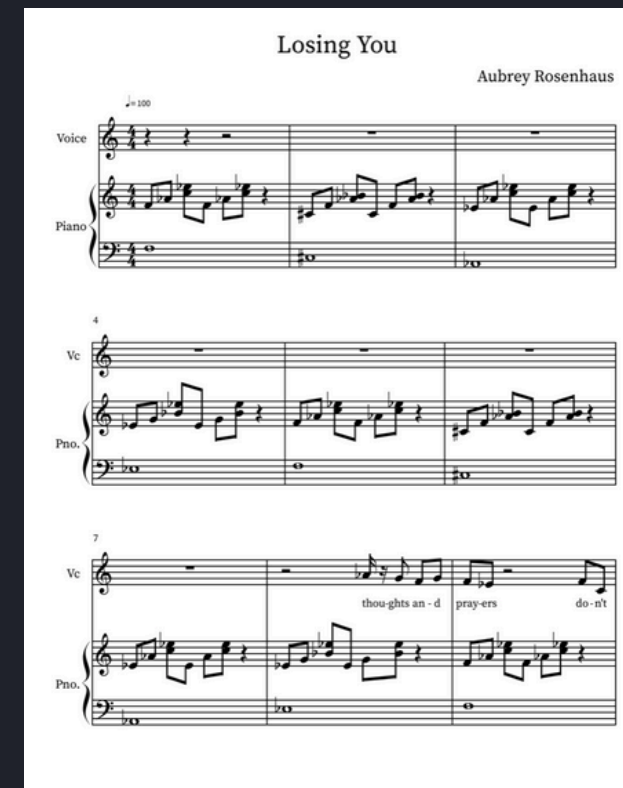
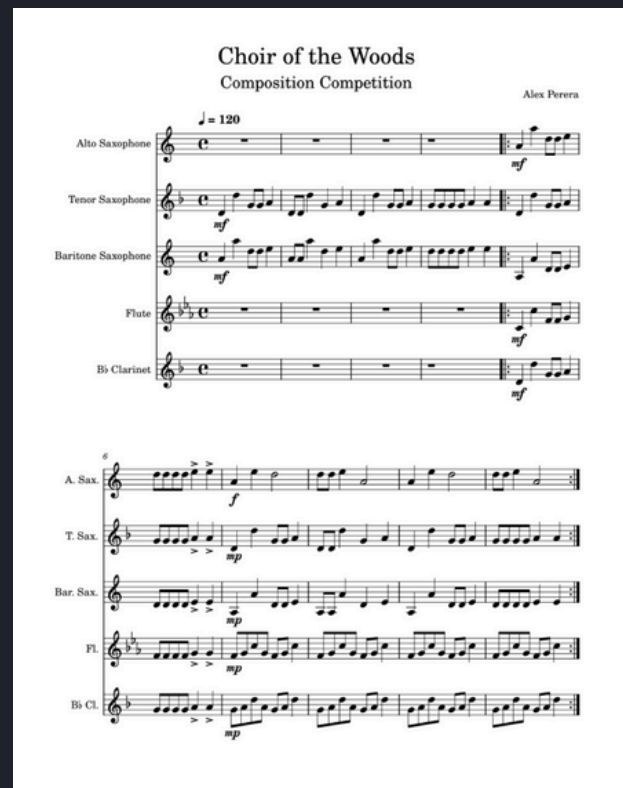
## Key Points :

All music styles and combinations of instrumentation are accepted. Entrant must be the composer and may also be the performer, or one of the performers. Use of copyrighted material is prohibited.

## Audio/Video File Requirements:

- Length must not exceed 5 minutes
- File size 1000MB or less
- Acceptable file formats are: MP3 and WAV files
- Music Notation required for Middle and High School.

**USE OF COPYRIGHTED MATERIAL IS PROHIBITED.**





# PHOTOGRAPHY CATEGORY

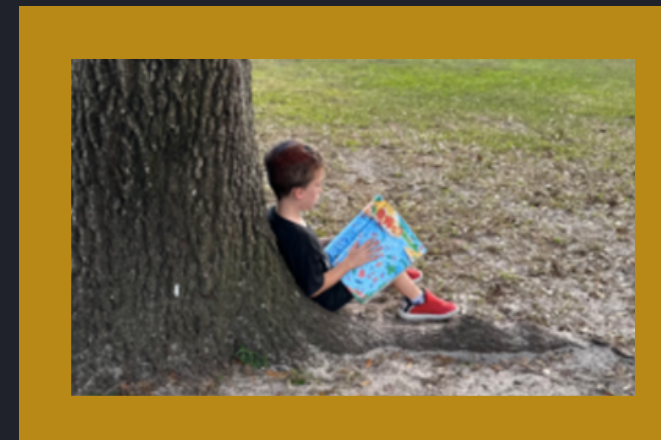
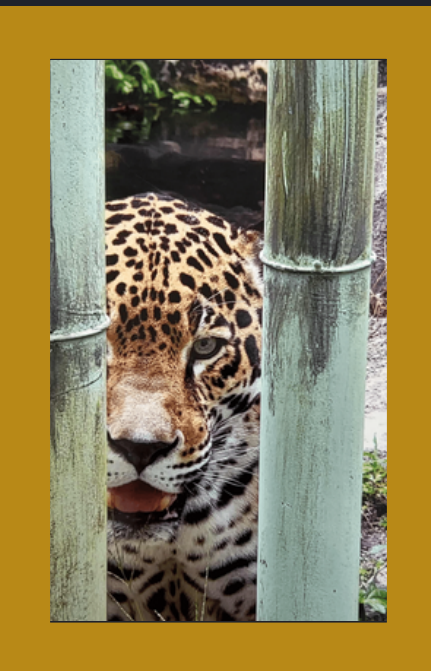
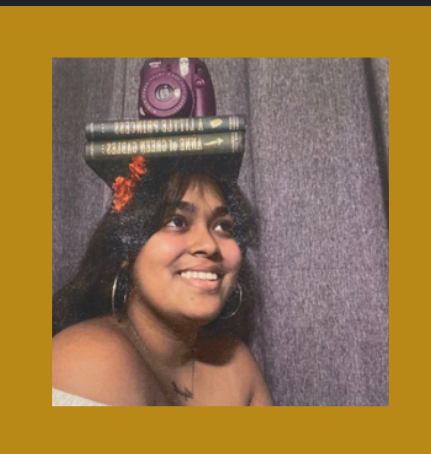
**Key Points :** Photo must be a single print/digital image. Collages or collections of photos are not accepted. Entrant must be the photographer & may use a variety of digital editing techniques including, but not limited to, multiple exposure, negative sandwich & photogram.

## Prints:

- Must be no smaller than 5 x 7" & no larger than 8 x 10"
- Mounted on mat or poster board no larger than 11x14"
- Framed prints are not accepted
- Include one digital image of artwork with your submission (jpeg, jpg, png)

## Digital Images:

- Dimensions must be at least 640x960 pixels and 300 dpi
- Accepted file formats: JPEG, JPG, PNG





# VISUAL ARTS CATEGORY

**Key Points:** Works of both fine and design arts are accepted, including but not limited to: architectural drawing & models, ceramics, collage, computer generated images, graphics, crafts, drawing, fashion, jewelry, fiber work, mixed media, painting, printmaking & sculpture.

## 2D Works:

- Mounted on sturdy material
- No larger than 12" x 16" with matting
- Framed entries are not accepted
- Include one digital image of artwork with your submission (JPEG, JPG, PNG).



## 3D Works:

- No larger than 12" x 12" x 12"
- Include 3 digital images of artwork at different angles.
- File formats accepted: JPEG, JPG, PNG).





# ACCESSIBLE ARTS

**Key Points:** This Accessible Arts Division welcomes students from all grades and offers non-artistic accommodations for students to participate fully in PTA Reflections. Students who identify as having a disability and receive services under IDEA, ADA, or have an IEP; Section 504 may enter in the Accessible Arts Division OR grade division most closely aligned to their functional abilities.

## Accommodations:

- Non-artistic accommodations (e.g. adaptive technology; transcribing; holding a camera)
- Assistants must refrain from being involved in the artistic process (e.g. developing an artist statement, choreography, music lyrics, storyboards, etc.)







*Thank you for coming!*





# QUESTIONS???

**EMAIL:** REFLECTIONS@HCCPTAP.TSA.ORG

**NATIONAL PTA REFLECTIONS**  
2024-2025  
CALL FOR ENTRIES!

*Accepting Imperfection*

**Explore the arts  
and express yourself!**

-  **DANCE**  
CHOREOGRAPHY
-  **FILM**  
PRODUCTION
-  **LITERATURE**
-  **MUSIC**  
COMPOSITION
-  **PHOTOGRAPHY**
-  **VISUAL ARTS**

**Get involved!** [PTA.org/Reflections](https://pta.org/reflections)