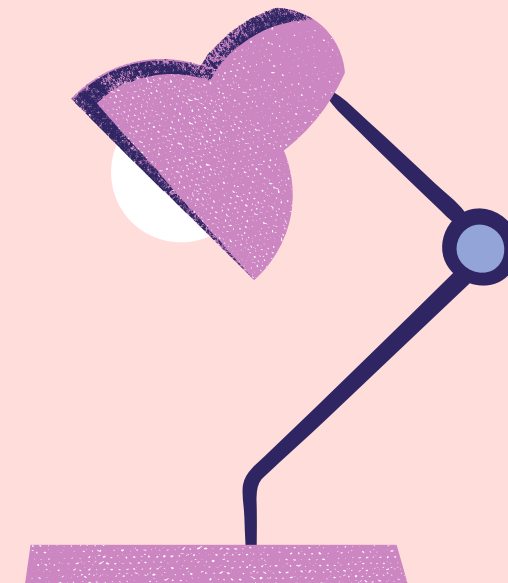


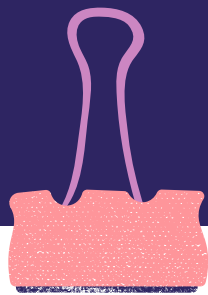
# HILLSBOROUGH COUNTY COUNCIL PTA/PTSA



## AWARDS



# Does Your PTA...



Do a lot of great programs?

Have special people who should be rewarded?

Make a positive change in your school and/or community?



**YES!! WE DID IT ALL!!**

Now is the time to start applying for County Awards!

# Take Note:

- **Eligibility** – You must be in compliance with County Council and Florida PTA.  
Valerie Licata - vpareas@hccptaptsa.org
- Your State and Council dues must be paid.
- Your Bylaws must be current (Updated within the last three (3) years)
- Your taxes must be filed.
- Individual nominees must be a **current member** of your local unit

## Application Details:

- **Purpose** – A description is provided for each award, it explains what the award is about and what is needed in the narrative. Make sure your program/individual fits the award.
- **Criteria** – the submission must meet all of the criteria listed, or it may be disqualified
- **Narrative** – Use this section to let your nominee shine! Tell us YOUR story!

# INFO YOU NEED TO GATHER BEFORE YOU APPLY

- **Official name of PTA/PTSA**
- **Number of students at school**
- **Number of PTSA Students on your Board (HS/MS)**
- **Number of Volunteers and Volunteer Hours**
- **Events your unit has attended this year (2022-23)**

**Notes**

**Be sure your unit is  
in good standing.  
HCC PTA will be  
verifying.**

**The number of PTSA  
Students is the number  
of students you have  
on your board.**



# To Apply:

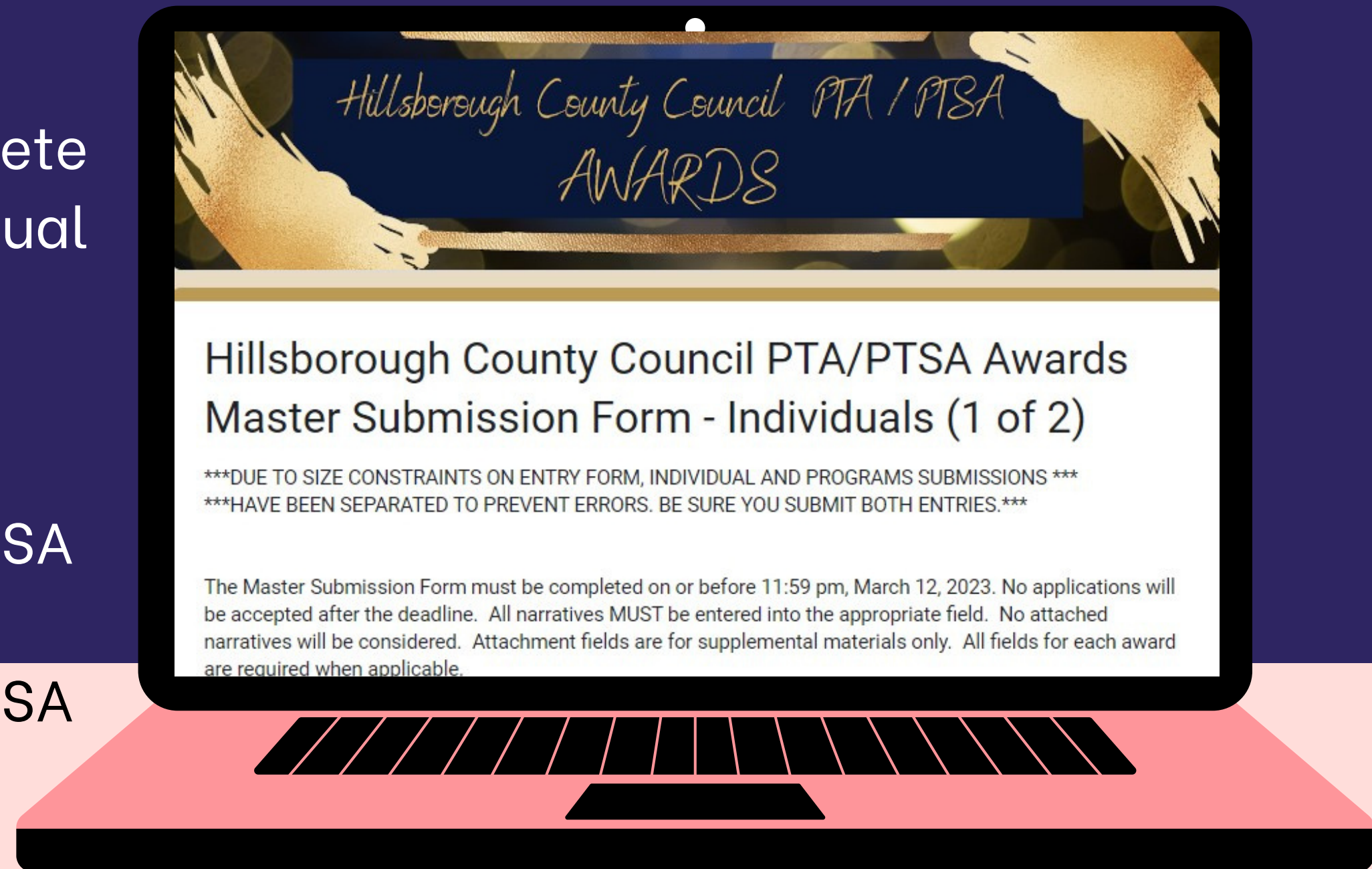
- Visit HCCPTA.PTSA.ORG

Locate the **Awards** page, and complete the entry for each of the links for Individual **and** Program Awards.

Links will also be available on –

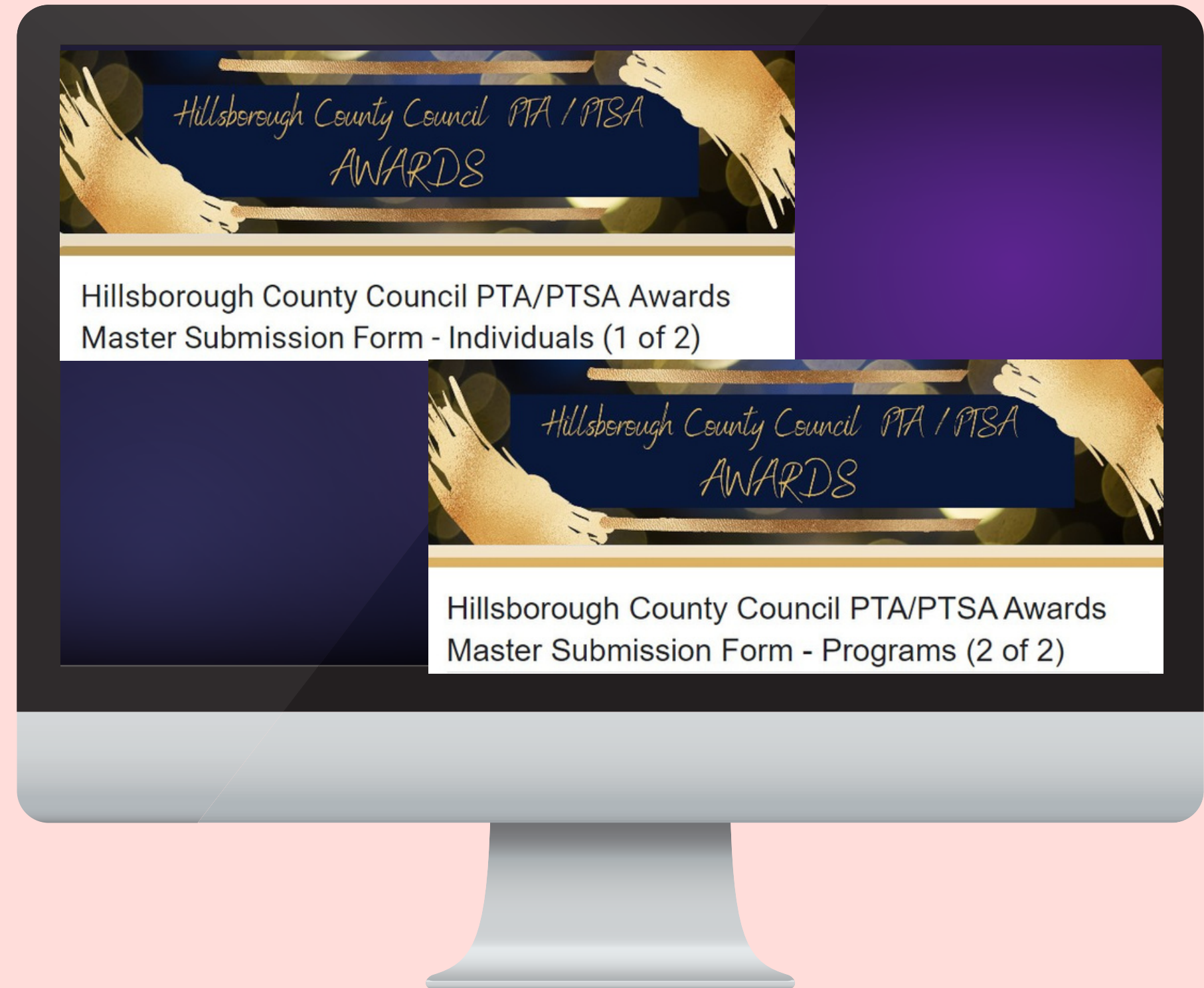
- Hillsborough County Council PTA/PTSA Facebook Page
- Hillsborough County Council PTA/PTSA Awards Facebook Page
- MemberHub

The applications will be available on our website beginning January 27th.



# Important Details...

- 2 Separate Entries – Individuals & Programs. Need to fill out Individual form even if only submitting Programs.
- Summary limited to 250 characters
- Narratives limited to 3,000 characters
- Apply for awards –  
<https://bit.ly/INDIVIDUALS2023>  
<https://bit.ly/PROGRAMS2023>



# WHAT IS NEEDED FOR EACH SUBMISSION?



## **3 Sentence Summary:**

This is the statement that will be read during the awards ceremony. You can include the nominated name and detailed description.

## **Narrative:**

Either copy and paste or type the awards entry. This will detail why nominated and how it supports the purpose of the PTA. DO NOT put any names, schools, mascots, or specific event names.

# INDIVIDUAL AWARDS

Volunteer of the Year  
Administrator of the Year  
President of the Year  
Student of the Year

Outstanding Student Leader (Project, Program, or Event)

Superman (Male Role Model or Male Engagement)

Instructional Person of the Year

Non-Instructional Person of the Year

Start-up PTA

Local Unit of the Year

Top Community Partner

## Note

All submissions should be PTA related.

Individuals should be PTA members.

Start-up PTAs are newly chartered PTAs within the last year or two.

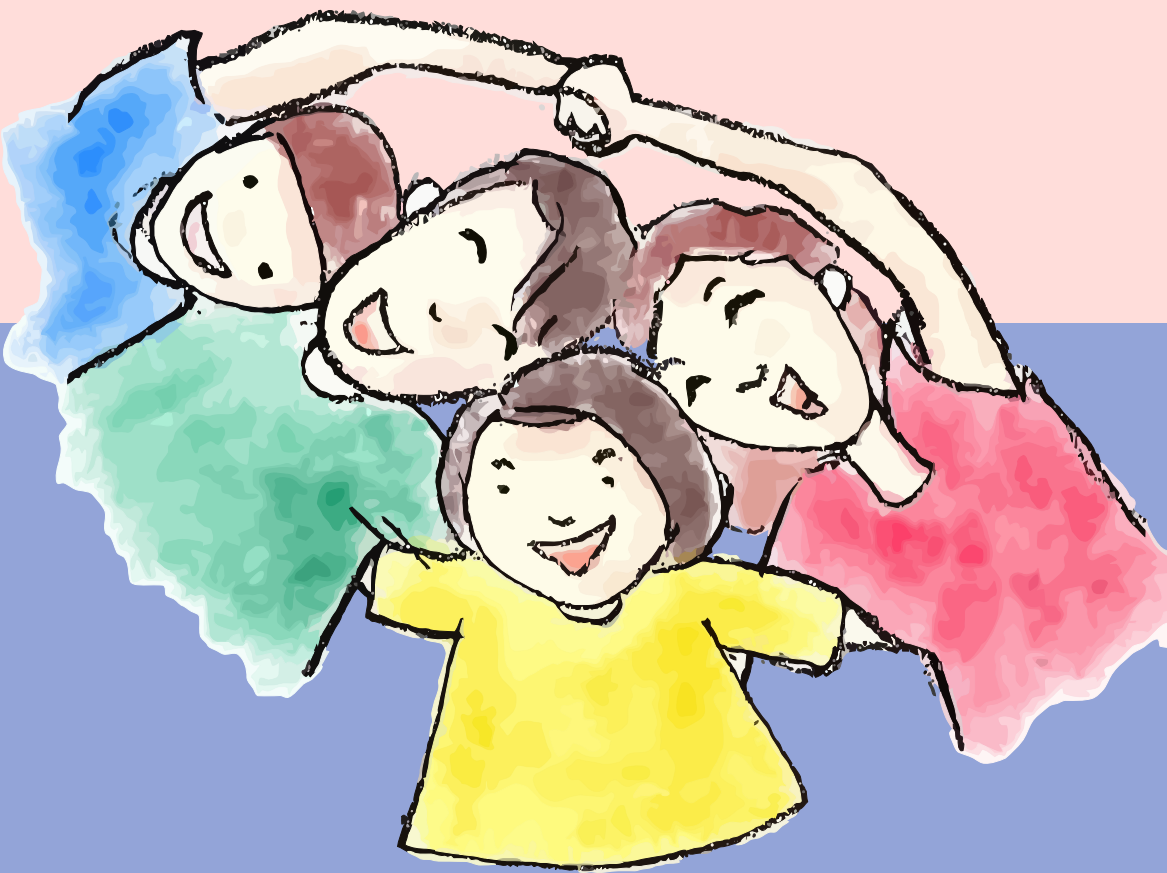




# PROGRAM AWARDS

Advocacy/Legislation  
Arts In Education  
Communications  
Education  
Family Involvement

At Your Service/3 Star  
Virtual Program  
Student Involvement  
Environmental  
Mentor-A-PTA  
Health & Safety



# CERTIFICATE AWARDS

## Golden Participation

Participated in 3 or more County/State Events

\*A list of County/State programs can be found on Submission Form 1.

## Student Involvement

1 or more students on PTSA Board

## Increased Membership

\*Numbers will be verified with Florida PTA



# DIVISIONS



Elementary  
Pre-K - 5th grade



Middle School  
6th - 8th grade  
K-8 Schools



High School  
9th - 12th grade

All K-8 schools may apply for any award for which they are eligible.

K-8 schools will be judged in the middle school category.

# Award Rubric

Each nomination will be scored in 5 different categories. Each category is worth up to 5 points. There are 3 judges per division. They can not judge in any division they are connected to.



## Things to ask yourself before submitting:

- Does my submission highlight how we reached our goals and made a positive impact on my school and community?
- Does it provide details on how you promoted family and student involvement?
- How does it focus on the welfare of children and families?
- Did you capture your “WHY?”
- Does it detail how you went “over and beyond?”
- Does it have a “WOW“ factor?
- Remember the PURPOSE OF PTA.

# IMPORTANT

Entries are judged blindly – Do **NOT** mention your **nominee, school, mascot, or PTA/PTSA** anywhere when writing your narrative as this will result in immediate disqualification.

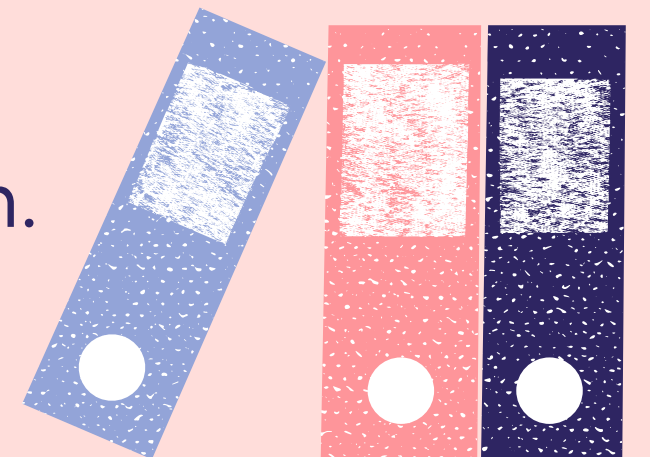
Focus your writing on the Purposes of PTA and how your nominee or program promoted these purposes.

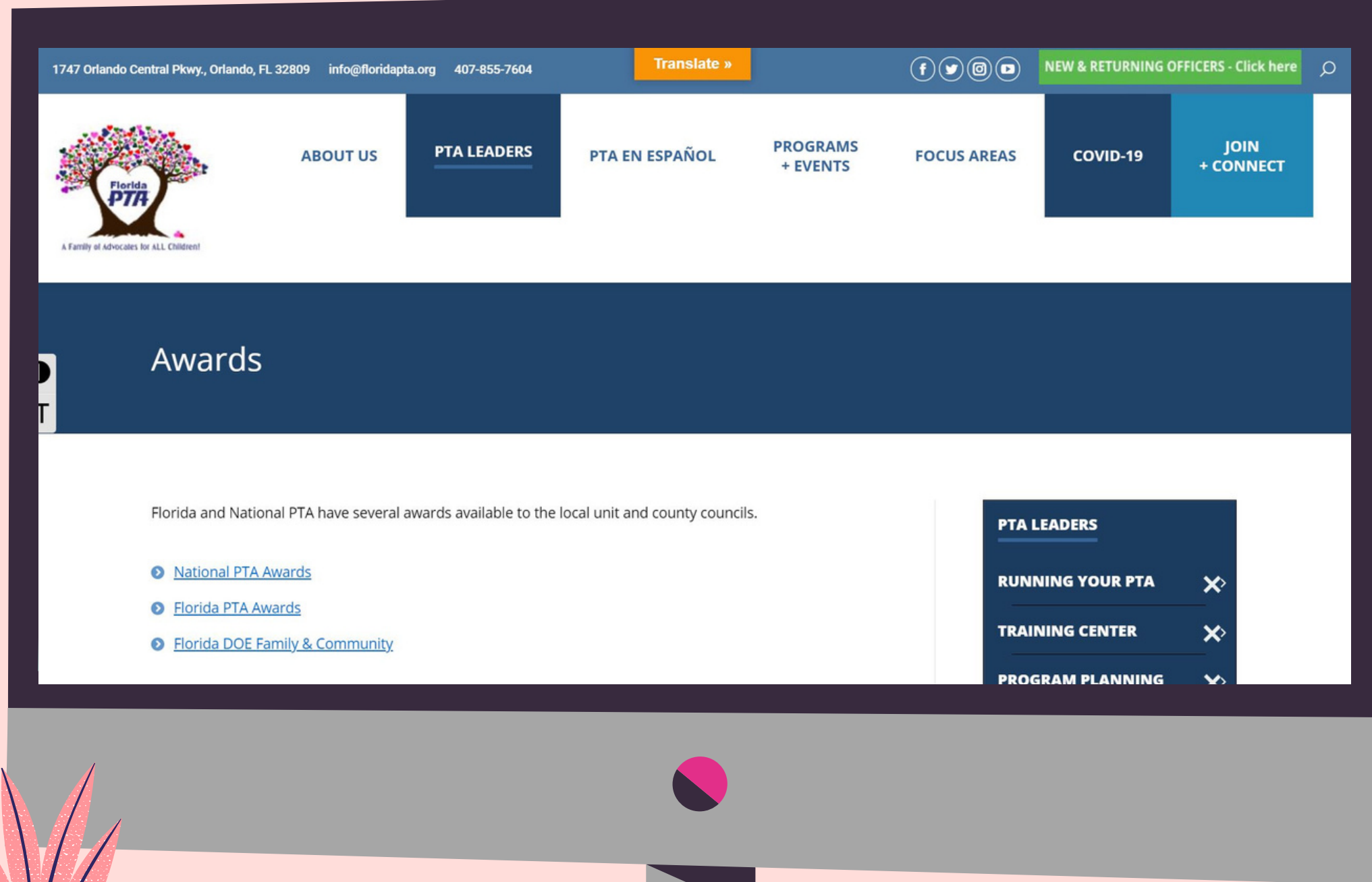
You **MUST** include a three-sentence synopsis of your application and the pronunciation of the recipient's name if applicable.

The synopsis cannot be more than 250 characters.

Entries must be submitted no later than March 12th at 11:59 pm.

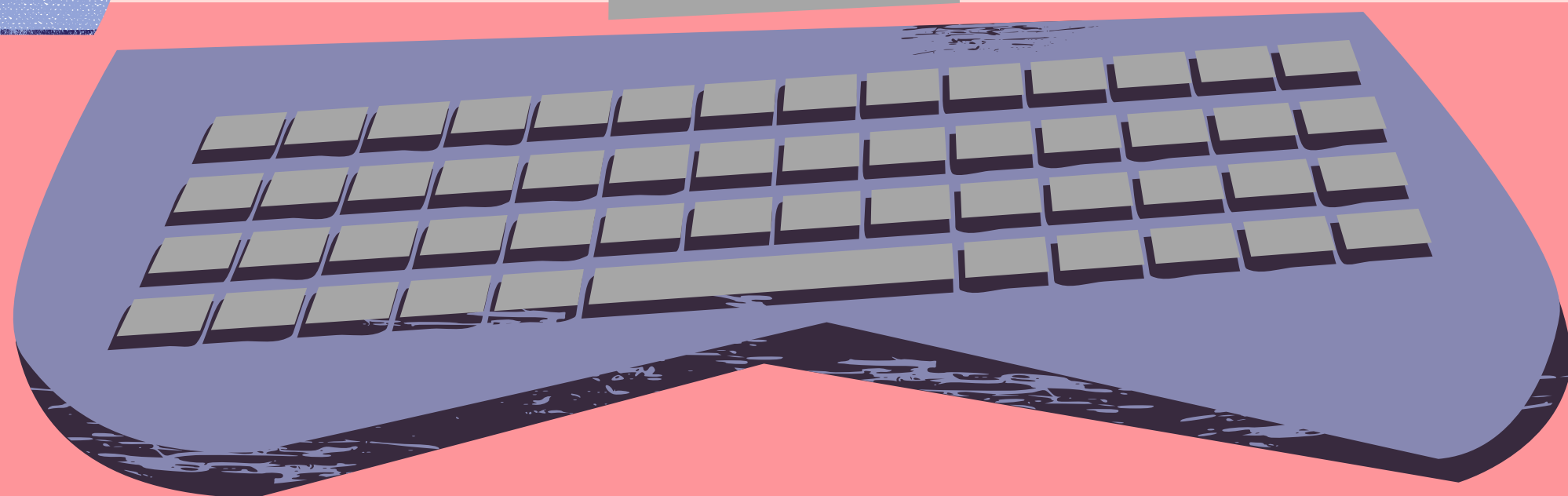
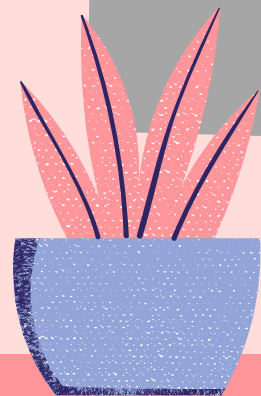
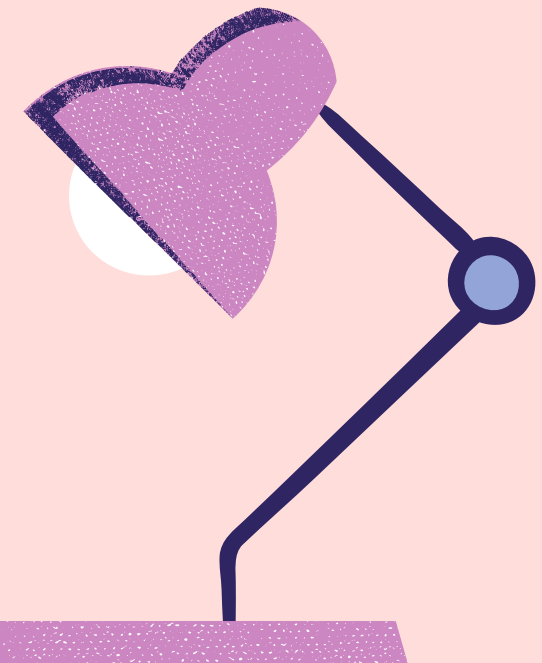
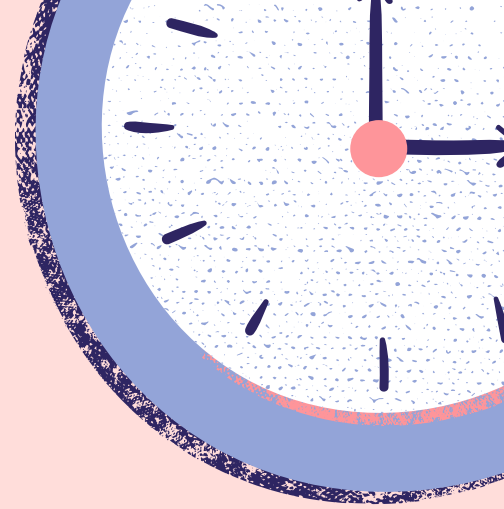
**NO EXCEPTIONS!**





DON'T FORGET TO  
CHECK OUT

**WWW.FLORIDAPTA.ORG**  
TO APPLY FOR STATE  
AWARDS TOO!  
DEADLINE MAY 1ST



# PURPOSES OF PTA

- To Promote the welfare of children and youth in home, school, places of worship, and throughout the community;
- To Raise the standards of home life;
- To Advocate for laws that further the education, physical and mental health, welfare, and safety of children and youth;
- To Promote the collaboration and engagement of families and educators in the education of children and youth;
- To Engage the public in united efforts to secure the physical, mental, emotional, spiritual, and social well-being of all children and youth, and;
- To Advocate for fiscal responsibility regarding public tax dollars in public education funding.

**\*Note- The Purpose of PTA can be found in your Bylaws. Remember to stick to the core values.**



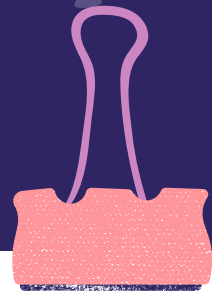
# Time to brainstorm...



- **These five points will help you build your submission. After answering these questions, go to the Awards Submission Forms and read the purpose of each award. Make sure your submission matches the purpose.**



Questions?



Janel Smith

[awards@hccptaptsa.org](mailto:awards@hccptaptsa.org)

FaceBook -

Hillsborough County Council

PTA/PTSA Awards Group